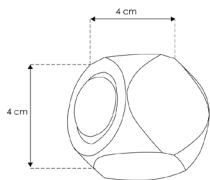
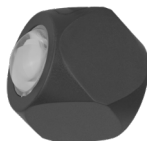
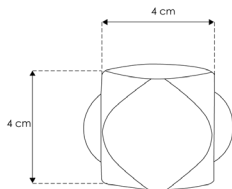
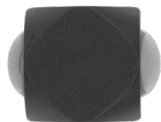
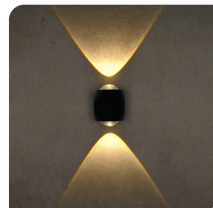


SOBREPONER / PARED



LED204PCHBE

[Acabado negro
(Blanco cálido)]



Material	Policarbonato acabado negro
Lámpara	Luminario para pared con dos salidas de luz indirecta
Color de luz	Blanco cálido
Alimentación	85-265 V ca
Potencia	2 W



NOM

IP
65



3 000 K
Blanco cálido

FL
150
lúmenes
Blanco cálido

2
W



CRI
80

3-4
step
MACADAM

PC
POLICARBONATO

RECOMENDADO
ÁREAS HÚMEDAS Y
LUGARES DE COSTA